

West Virginia University  
The Student Assembly - Student Government Association  
Assembly Resolution: AR-2023-10-02  
**AN ASSEMBLY RESOLUTION FOR INCREASED OUTDOOR STUDY  
SPACES**

<b>Short Title:</b>	<b>Increase Outdoor Study Spaces</b>
<b>Author(s):</b>	<b>Garrett Oursler, College Senator (Davis) Gabrielle Frazier, Senator Andrew Indomenico, College Senator (Eberly)</b>
<b>Sponsor(s):</b>	<b>Susie Risk, President Pro Tempore Elijah Eastman, Senator Joanna Switala, College Senator (Eberly) Ian Jackson, College Senator (Statler) Matthew Olivero, Senator Anna Witt, College Senator (CAHS) Peyton Bielinski, College Senator (CAHS) Julia Lutman, College Senator (Chambers)</b>
<b>Contributor(s):</b>	
<b>Committee Endorsement:</b>	<b>Strategic Initiatives</b>
<b>First Reading Date:</b>	<b>November 1, 2023</b>
<b>Second Reading Date:</b>	<b>November 8, 2023</b>
<b>Date of Approval:</b>	<b>November 8, 2023</b>
<b>Presidential Signature:</b>	

**Whereas**, the WVU mission statement reads, “West Virginia University (is) committed

---

to...advancing education...by providing access and opportunity; and,”<sup>1</sup>

**Whereas**, the SGA mission statement reads, “We, the students of West Virginia University, desire to preserve within our University an atmosphere that helps to foster an open exchange of ideas with civil discussion, inquiry, and self-expression;”<sup>2</sup>and,

**Whereas**, the SGA Vision reads, “To be a Student Government Association that serves the students by; creating a campus that can accommodate everyone,...enhancing environmental stewardship,...fostering healthy lifestyles, and developing innovative partnerships with students, faculty, staff and other key stakeholders;”<sup>2</sup>and,

**Whereas**; in a survey conducted by the SGA Sustainability Committee last year, 55.78% of respondents stated that they felt the quality of outdoor study or leisure spaces was either negative, needs improvement, or neutral;<sup>3</sup>and,

**Whereas**; in the aforementioned survey, 76.8% of total respondents wanted to see more initiatives centered around outdoor study spaces on campus;<sup>3</sup>and,

**Whereas**; students notice the current efforts undertaken by the university to improve this issue and appreciate the work put forth by campus workers to make this possible; and,

**Whereas**; there have been many studies that show, “that higher availability and use of campus green space was found to be associated with improved quality of life;”<sup>4</sup>and,

**Whereas**; the West Virginia University Modernization Program under WVU Strategic Initiatives will focus on student experience and systems enhancement from 2023-2026<sup>5</sup>; and,

**Whereas**; recommendations for additional outdoor study spaces were made based on proximity to student activity, to address inadequate seating across areas of campus, or

---

<sup>1</sup> [Mission - West Virginia University](#)

<sup>2</sup> [Mission and Vision | Student Government Association | West Virginia University](#)

<sup>3</sup> [Sustainability Report.pdf](#)

<sup>4</sup> <https://doi.org/10.1016/j.landurbplan.2019.03.003>

<sup>5</sup> [WVU Modernization Program | Strategic Initiatives | West Virginia University](#)

---

to add additional options for current high-traffic areas<sup>6</sup>,

*Therefore, be it resolved by the Student Assembly of West Virginia University:*

**Section 1:** WVU SGA encourages the university to provide more outdoor study spaces across Downtown, Evansdale, and Health Sciences campuses;

**Section 2:** WVU SGA encourages the university to ensure outdoor study spaces and other outdoor recreation areas are accessible to students with disabilities;

**Section 3:** Upon passage and approval, this legislation shall be forwarded to the following:

Mandates:

Rob Alsop, Vice President of Strategic Initiatives

Ted Svehlik, Vice President of Auxiliary and Business Services

Jamie Kosik, Assistant Vice President of Facilities and Services

Charles Roberts, Assistant Vice President of Facilities and Services

Jim Mirage, Director of Roads and Grounds

Traci Knabenshue, Director of Sustainability

G. Corey Farris, Dean of Students

Madison Santmyer, Student Body President

Dr. Thanh Le, Director, Student Engagement and Leadership (Advisor)

Karsey Prichard, Executive Secretary

Daily Athenaeum

---

<sup>6</sup> See Appendix A

---

## APPENDIX A- PROPOSED STUDY SPACE EXPANSION LOCATIONS

### SECTION 1: Downtown

*Proposed Increase in Permanent Seating Locations:*

Site 1: Mountainlair Greens;

*Request: Bolted picnic tables with umbrellas*



Site 2: Life Science Building Patio;

*Request: Bolted picnic tables with umbrella covering*

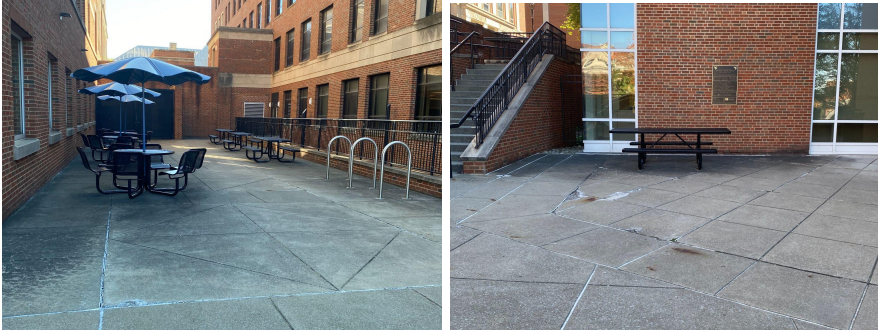


Site 3: Downtown Campus Library; Bolted picnic tables with some covered;

*Request: Umbrella covered tables with charging, more picnic tables*

---





*Proposed Increase in Semi-Permanent Seating Options:*

Site 1: Mountainlair front lawns;  
**Request: More adirondack chairs**



Site 2: E Moore Hall front lawns;  
**Request: Consistent floating patio chairs, tables, cushions, adirondack chairs**



Site 3: Life Sciences Building Front Lawn:

*Request: More adirondack chairs, picnic tables*



Site 4: Mountainlair Greens Open Space;

*Request: More unbolted picnic tables, under a covering*



*Proposed Additions of Outdoor Seating Spaces:*

Site 1: Downtown Campus Library;

*Request: Adirondack chairs*



## SECTION 2: Evansdale

*Proposed Increase in Permanent Seating Locations:*

Site 1: Evansdale Residential Complex Front Lawns:

*Request: More bolted table and chairs*



Site 2: Evansdale Residential Complex Front Lawns:

*Request: More bolted tables and chairs*



Site 3: Student Recreation Center;

*Request: More picnic tables with charging ports and umbrellas*





*Proposed Increase in Semi-Permanent Seating Options:*

Site 1: Engineering PRT Station/Building;

*Request: More adirondack chairs*



Site 2: Evansdale Library/National Research Center for Coal and Energy;

*Request: Adirondack chairs*



Site 3: Agricultural Sciences Building;

*Request: Picnic tables with covering*



Site 4: Student Health Center/Soccer Field;

*Request: Adirondack chairs*

---



Site 5: Behind Allen Hall/Side Pocket of Towers;  
**Request: Adirondack chairs**



*Proposed Additions of Outdoor Seating Spaces:*

Site 1: Engineering PRT Station/ Engineering Building Front Lawns;  
**Request: Adirondack chairs, lounge furniture similar to the E. Moore hall furniture**



Site 2: Agricultural Sciences Building;

*Request: Picnic Tables*



Site 3: Creative Arts Center

*Request: Picnic tables and adirondack chairs*



Site 4: Evansdale Library Lawns;

*Request: Adirondack chairs*

---





Site 5: Evansdale Residential Complex Front/Side Lawns;  
*Requests: Picnic Tables*



### **SECTION 3: Health Sciences**

*Proposed Increase in Permanent Seating Locations:*

Site 1: Pylons Front Lawns;  
*Request: Tables with umbrella covering*



*Proposed Increase in Semi-Permanent Seating Options:*

Site 1: Pylons Side Lawns;

---



**Request: Adirondack chairs**



*Proposed Additions of Outdoor Seating Spaces:*

Site 1: Pylon Front Lawns;

**Request: Furniture similar to E. Moore hall lawns**

