


West Virginia University
The Student Assembly - Student Government Association
Assembly Resolution: AR-2025-04-01
**AN ASSEMBLY RESOLUTION TO ENCOURAGE ADDITIONAL
ACCESSIBILITY MEASURES ON THE PRT STATIONS**

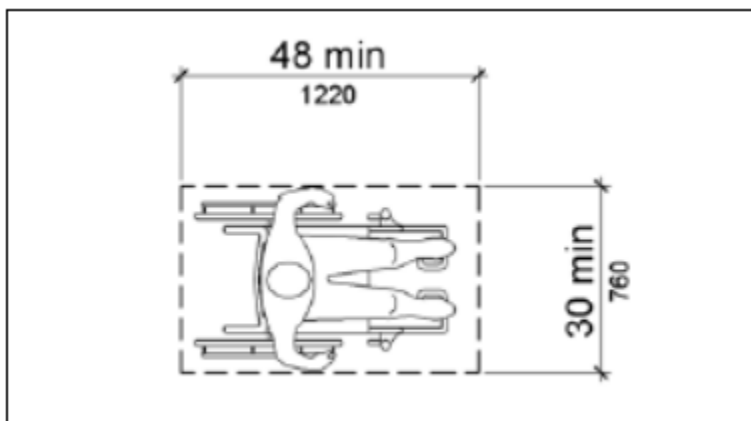
Short Title:	PRT Seating Bill
Author(s):	Colin Street, Senator Alex Tadros, College Senator (Statler)
Sponsor(s):	Michael Mugnano, College Senator (Chambers) Shelby Davis, Senator Olivia E. Robinson, College Senator (Eberly) Elise Vuiller, Senator Rozaireo Jones, College Senator (Reed) Molly Meeker, Senator Julia Lutman, College Senator (Chambers)
Contributor(s):	Bryan Cole, Intern Bradley Dale, Intern Maria Felsher, Intern Emily Howell, Intern Wyatt Armbrester, Intern
Committee Endorsement:	Community and Government Relations Steering Committee
First Reading Date:	4/2/2025
Second Reading Date:	4/9/2025
Date of Approval:	4/9/2025
Presidential Signature:	

Whereas, WVU’s mission statement includes a commitment to “creating a diverse and inclusive culture that advances education, healthcare, and prosperity for all by providing access and opportunity;” and,¹

Whereas, SGA’s mission statement includes a commitment to “promoting inclusion, creating a campus that can accommodate everyone;”² and,

Whereas, Board of Governors rule 1.6 prohibits discrimination, including: “failure to provide reasonable accommodation, consistent with state and federal law, to persons with disabilities;”³ and,

Whereas, Section 305.3 of Chapter 3 in the 2010 ADA Standards for Accessible Design Standards states that a minimum floor space of 30in X 48in must be maintained, as outlined below



; ⁴ and,

Whereas, Section 403.5.1 of Chapter 4 in the 2010 ADA Standards for Accessible Design Standards states that “the clear width of walking surfaces shall be 36 inches (915 mm) minimum,” with the exception that “the clear width shall be permitted to be reduced to 32 inches (815 mm) minimum for a length of 24 inches (610 mm) maximum provided that reduced width segments are separated by segments that are 48 inches

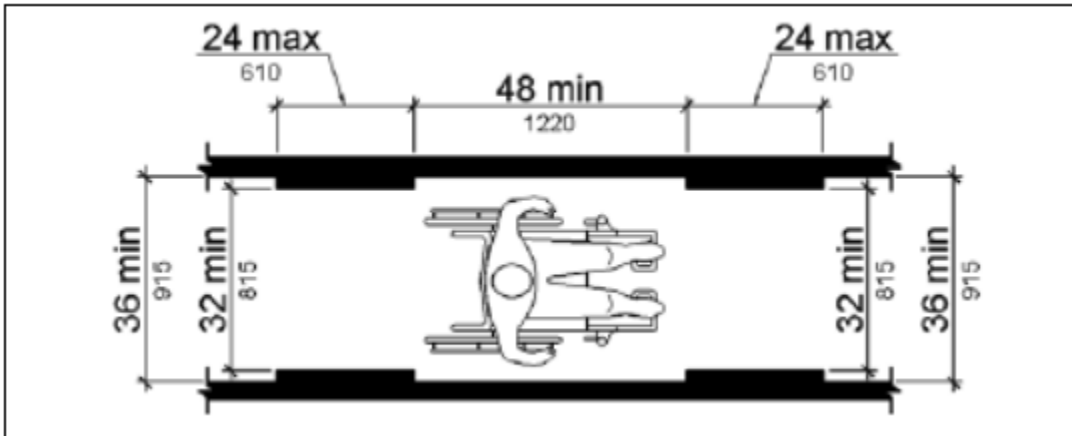
¹ [Mission - West Virginia University](#)

² [Mission and Vision | Student Government Association | West Virginia University](#)

³ [WVU BOG Rule 1.6](#)

⁴ [ADA Rule 305.3 Chapter 3, 2010 ADA Standards](#)

(1220 mm) long minimum and 36 inches (915 mm) wide minimum,” as outlined below:



;⁵ and,

Whereas, WV state code section 17-16F-1 details recommendations for public transit stations in the state;⁶ and,

Whereas, WVU was awarded \$6.4 million from the U.S. Department of Transportation for structural improvements to the PRT stations to be implemented in phases over the five years from 2024 to 2029;⁷ and,

Whereas, seating on the PRT stations would provide benefits to all students regardless of whether or not they possess a physical disability;⁸ and,

Whereas, the eight PRT platforms across five stations currently don't have seating options for student; and,⁹

Whereas, the PRT Facilities staff supports the installation of seating for student accessibility standards on the PRT station platforms; and,¹⁰

Whereas, the PRT serviced 1,565,718 passenger rides in FY 2023, showing the

⁵ [ADA Rule 403.5.1 Chapter 4, 2010 ADA Standards](#)

⁶ [State Code Section 17-16F-1](#)

⁷ [WVU Press Release of Awarded Congressionally Directed Spending](#)

⁸ [Article Detailing the Universal Benefits of Public Seating](#)

⁹ Appendix 1

¹⁰ Appendix 2

importance of the PRT to transportation services in Morgantown; and,¹¹

Whereas, working with the staff that oversee the PRT and Accessibility, it was determined that the seating option pictured in Appendix 3 would work best for the PRT station platforms in providing seating options while preventing interruptions in traffic flow.¹²

Therefore, be it resolved by the Student Assembly of West Virginia University:

Section 1: The Student Government Association supports the installation of seating on the PRT station platform (where students wait for the PRT after swiping their WVU student ID).

Section 2: The Student Government Association supports the Grant Resource Center's effort to aid the Student Government Association in applying for \$6,000 in grant funding to purchase seating for all the PRT station platforms at WVU.

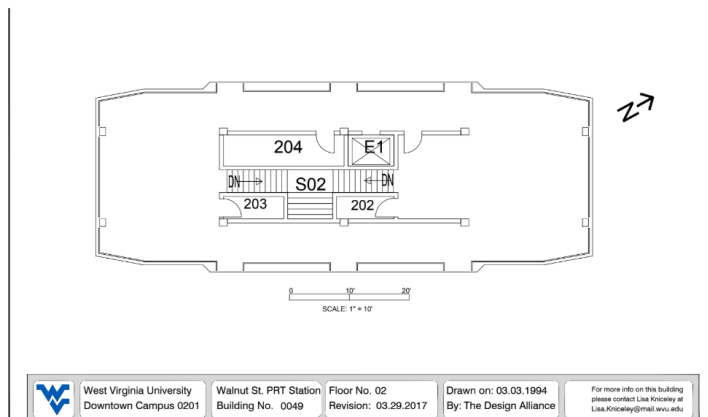
Mandates:

G. Corey Farris, Dean of Students
Dr. Thanh Le, Director, Student Engagement and Leadership (Advisor)
University President Gordon E. Gee
Chuck Roberts, Assistant Vice President for Facilities Management
Jeremy Evans, WVU Director of Transportation
Stephen Vozniak, Assistant Director of PRT
Susan Stevenson, Assistant Director of Student Accommodations
Daily Athenaeum
Charlie Long, Student Body President
Abigail Browning, Student Body Vice President
Haley Orcutt, Executive Secretary

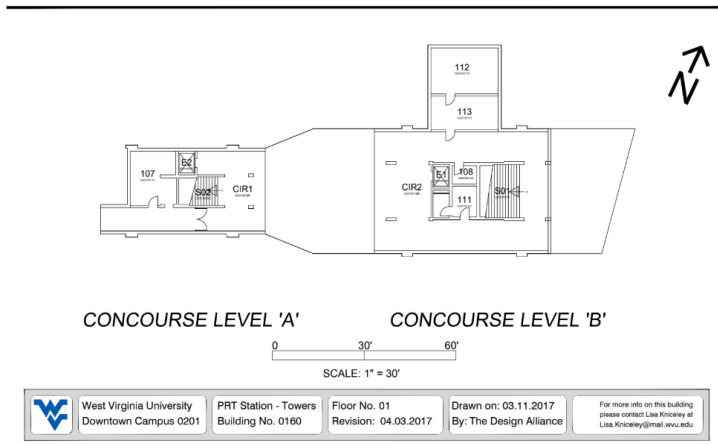
¹¹ Data collected from the WVU Department of Transportation (Obtained via Email)

¹² Appendix 3

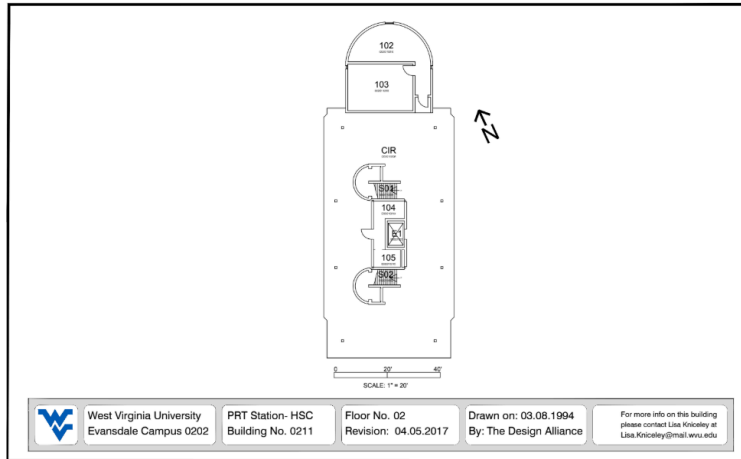
Appendix 1: Floor Plans of the PRT Station Platforms



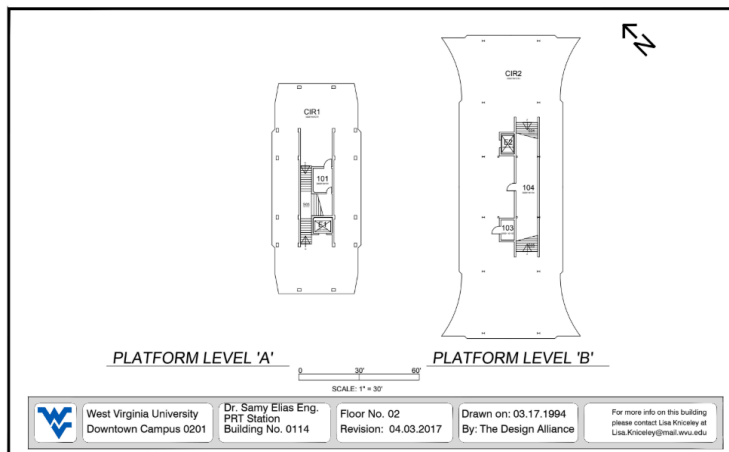
Walnut PRT Station Platform



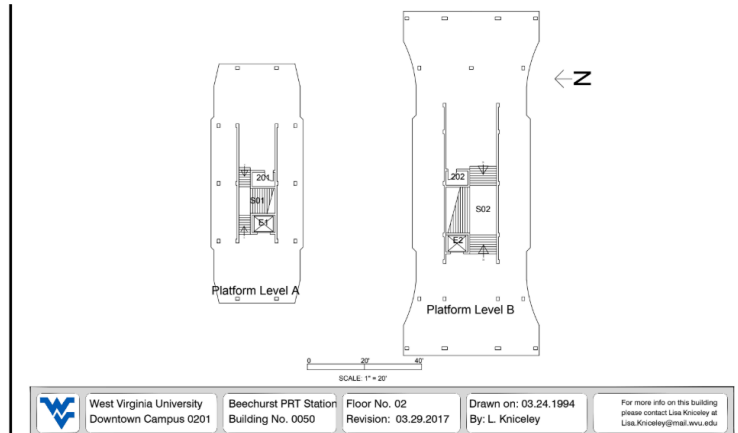
Towers PRT Station Platforms



Health Sciences PRT Station Platform



Engineering PRT Station Platforms



Beechurst PRT Station Platforms

Appendix 2: Letter of Support from WVU's Department of Transportation




RE: WVU SGA ADA Seating Project

The West Virginia University Department of Transportation supports the SGA's efforts to investigate ADA seating options for PRT stations. WVU Department of Transportation will not be providing funding for the project. PRT staff will support the project in determining project feasibility prior to any procurement or installations.



Jeremy Evans
Director of Transportation

Appendix 3: Approved Seating Option by WVU's Department of Transportation



Hometeam Seats

Better Bench 2 Seater

\$618.00

Shipping calculated at checkout.

4 interest-free installments, or from **\$55.78/mo** with [shop](#)

[Check your purchasing power](#)

Choose Your Leg Option




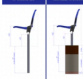




for Wall Mount Installation ▾

ADD TO CART

BUY IT NOW

Our 2-Seater utilizes quality tested stadium seating that provides the simplicity of a bench with the comfort of an individual chair. This design eliminates personal space issues associated with a shared bench with generous 20-inch spacing per seat, all while ensuring no loss of capacity. Better Bench has three leg options to choose from, the Standard Portable & Floor Mountable Feet, In-Ground Installation Legs, or Wall Mounted Brackets.

[SHARE](#) [TWEET](#) [PIN IT](#)



<https://www.hometeamseats.com/pages/better-bench>